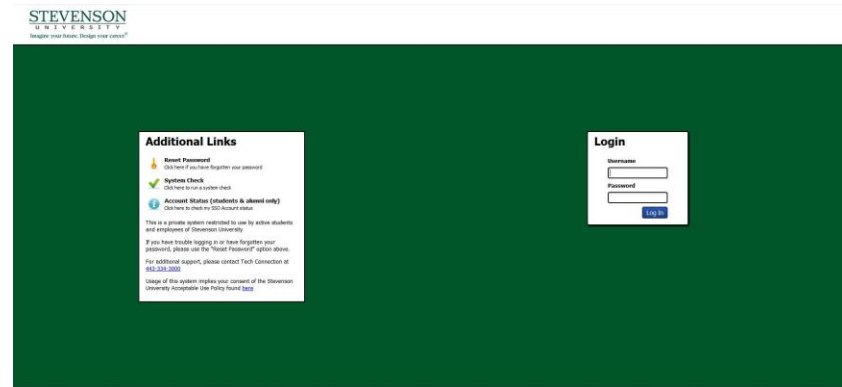


Accessing Enterprise Desktop

For remote access to Colleague, Informer, network drives and other services

Accessing Colleague and other secure applications from off campus requires the use of the SUCloud to serve as the gateway for a secure connection. To access this and other secure services remotely, you must be running a Windows computer or a Mac with the free Microsoft Remote Desktop application installed.

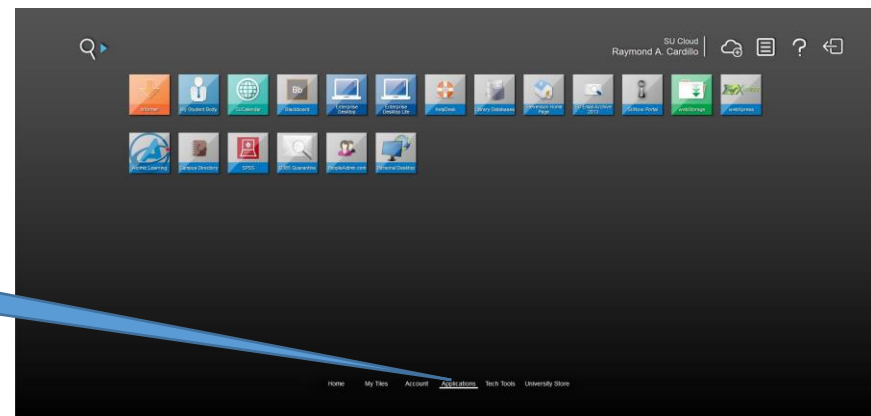
With your browser, go to the SUCloud at <https://sucloud.stevenson.edu>



Login with your Single Sign-On account

Once logged in, click the Applications tab at the lower center of the screen

The Applications Tab

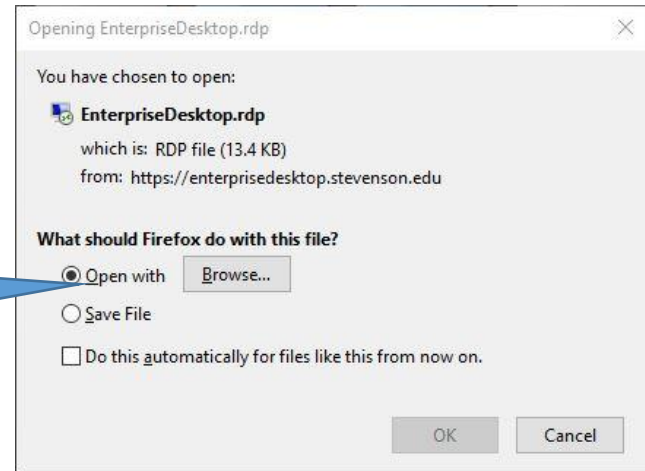


From the list of available applications, locate and click on “Enterprise Desktop”

A download prompt will indicate that the **EnterpriseDesktop.rdp** file is being downloaded.

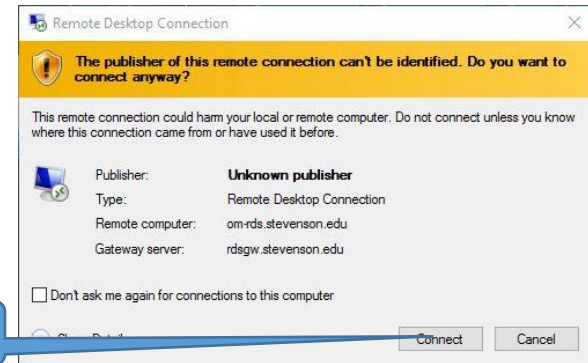
Select the “Open With” option and click OK

Select “Open File” then click “OK”



When the yellow “Publisher cannot be verified” prompt appears, click “Connect”

Click “Connect”

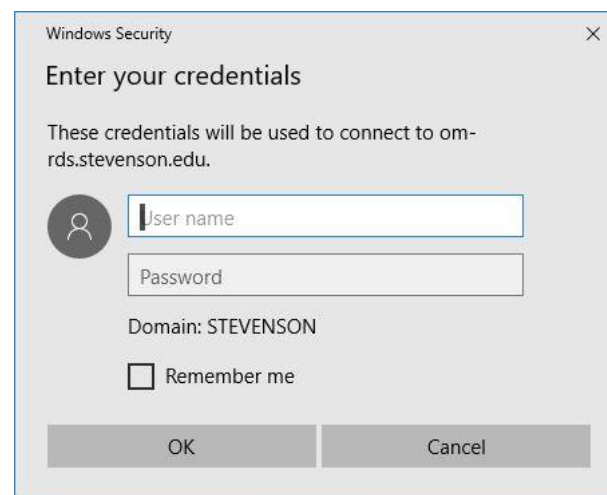


The final step is the Windows Login. Enter your Single Sign-On credentials and click OK to be brought to the Enterprise Desktop

Shortcuts to the following applications are displayed on the desktop:

- Colleague (production)
- Colleague (test)
- Informer
- Recruit
- DocEView

Additionally, the Windows Explorer application is located within the Windows menu, providing access to all network drives (Home, Department, Collaboration, etc.)



Special Note

There is a version of Enterprise Desktop that will run directly within your browser called **Enterprise Desktop Light**. You can locate this app within the SUCloud. This app will not require many of the steps outlined above to access the service, but with reduced resolution and functionality to accommodate browser compatibility.

Enterprise Desktop Light may be a fast and easy solution for accessing secure services when using tablets and older devices.